



Northumberland Park, London, N17 0TL

Offers Over £320,000



Cole Harding is excited to present this amazing opportunity to see this two bedroom top floor maisonette located in the developing area of Tottenham.

The property boast two double bedrooms, large living room, Balcony through fitted kitchen & bathroom. The property also comes with private rear garden, and comes with the share of Freehold.

This apartment is ideal for a first time buyer or a buy to let purchaser.

Close to Northumberland park train station and White Hart Lane, local amenities, schools and Parks.

900 plus lease, no Ground rent.

Call to book an appointment

- Top Floor Maisonette
- Large Living room
- Kitchen that leads to private rear Balcony
- Two double bedrooms
- Private rear garden
- Loft space
- Share of freehold
- Chain free
- Close to excellent travel links
- Close to shops, Schools & Parks

Viewing

To arrange a viewing on this property or require further information please contact one of our team on 0208 059 4444

119B Northumberland Park. N17 0TL
 Approximate Gross Internal Floor Area = 59.4 sq m / 640 sq ft

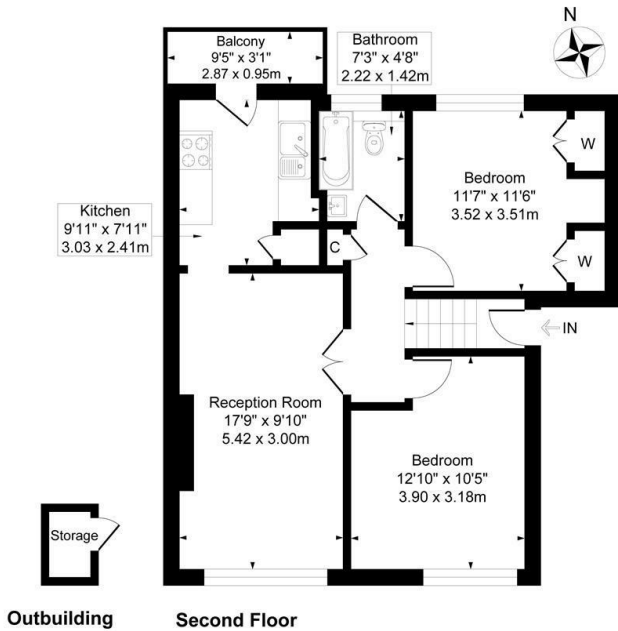


Illustration for identification purposes only, not in scale



Energy Efficiency Rating		Current	Potential
Very energy efficient - lower running costs			
(92 plus)	A		
(81-91)	B		
(69-80)	C	69	77
(55-68)	D		
(39-54)	E		
(21-38)	F		
(1-20)	G		
Not energy efficient - higher running costs			
England & Wales		EU Directive 2002/91/EC	



These particulars, whilst believed to be accurate are set out as a general outline only for guidance and do not constitute any part of an offer or contract. Intending purchasers should not rely on them as statements of representation of fact, but must satisfy themselves by inspection or otherwise as to their accuracy. No person in this firm's employment has the authority to make or give any representation or warranty in respect of the property.