



Worcester Avenue, London, N17 0TU

£550,000



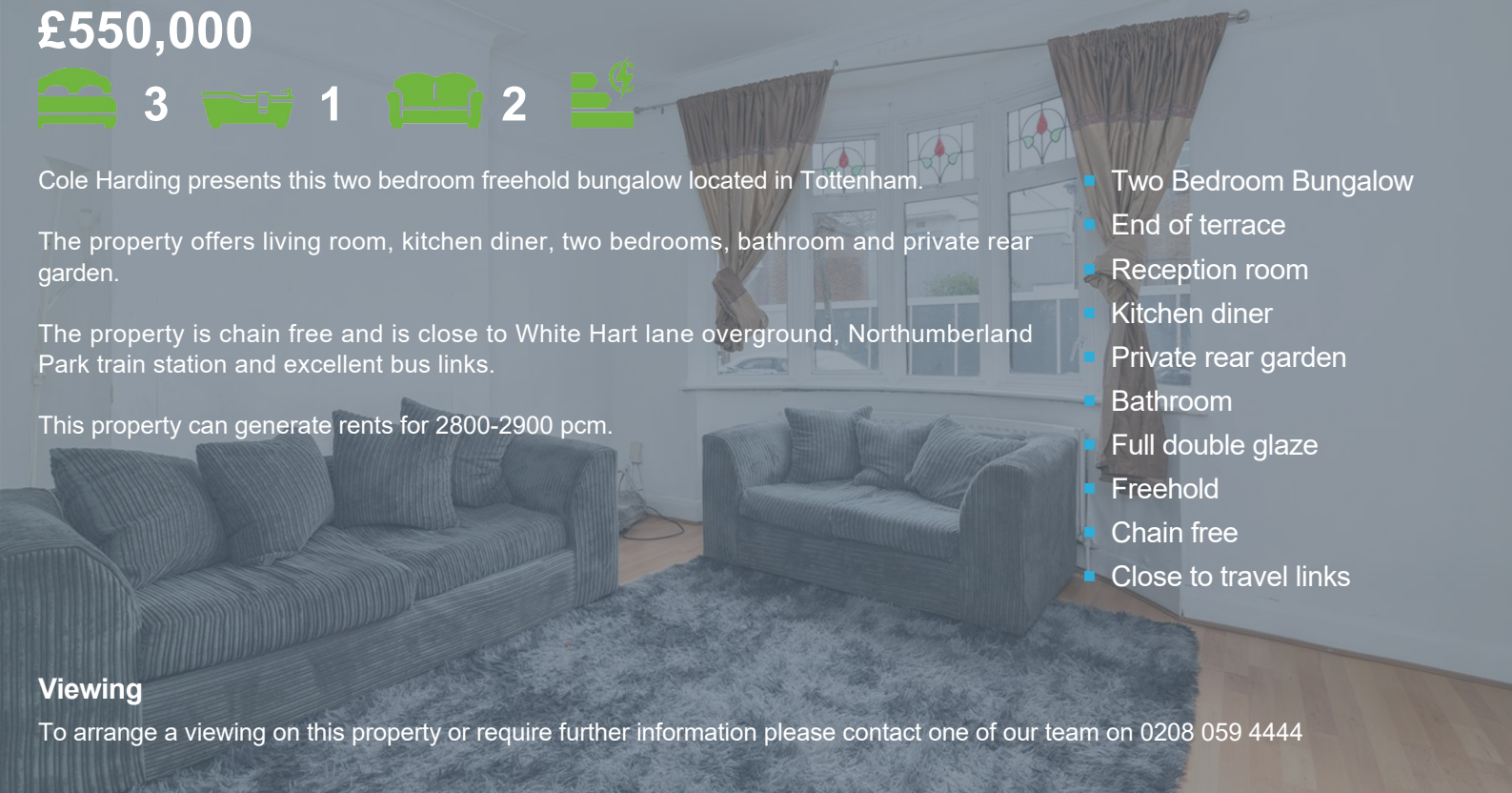
Cole Harding presents this two bedroom freehold bungalow located in Tottenham.

The property offers living room, kitchen diner, two bedrooms, bathroom and private rear garden.

The property is chain free and is close to White Hart lane overground, Northumberland Park train station and excellent bus links.

This property can generate rents for 2800-2900 pcm.

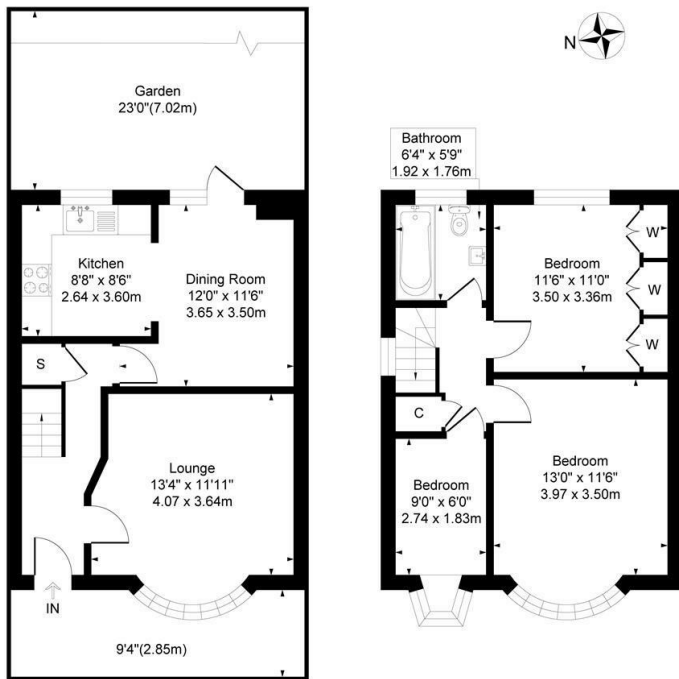
- Two Bedroom Bungalow
- End of terrace
- Reception room
- Kitchen diner
- Private rear garden
- Bathroom
- Full double glaze
- Freehold
- Chain free
- Close to travel links



Viewing

To arrange a viewing on this property or require further information please contact one of our team on 0208 059 4444

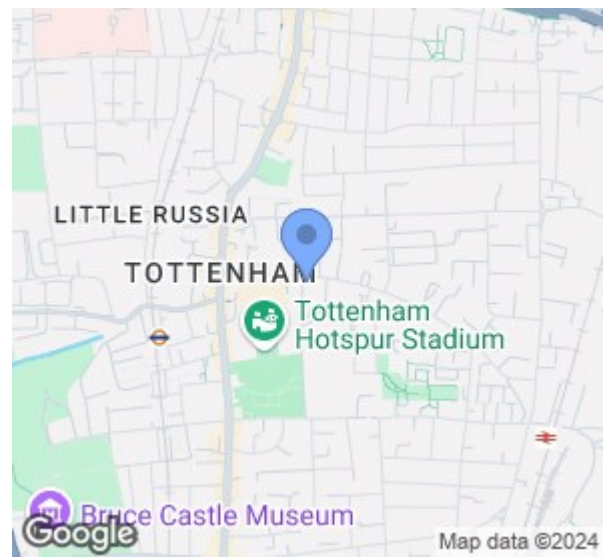
Approximate Gross Internal Floor Area = 83.7 sq m / 902 sq ft



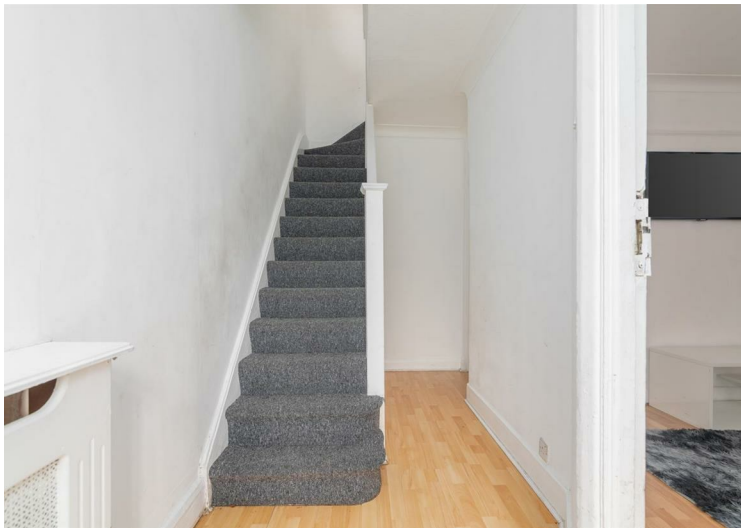
Ground Floor

First Floor

Illustration for identification purposes only, not in scale



Energy Efficiency Rating		Current	Potential
Very energy efficient - lower running costs			
(92 plus)	A		
(81-91)	B		
(69-80)	C		
(55-68)	D		
(39-54)	E		
(21-38)	F		
(1-20)	G		
Not energy efficient - higher running costs			
England & Wales			EU Directive 2002/91/EC



These particulars, whilst believed to be accurate are set out as a general outline only for guidance and do not constitute any part of an offer or contract. Intending purchasers should not rely on them as statements of representation of fact, but must satisfy themselves by inspection or otherwise as to their accuracy. No person in this firm's employment has the authority to make or give any representation or warranty in respect of the property.

Cole Harding

11 Northumberland Park, London, N17 0TA

T. 0208 059 4444 | E. info@coleharding.co.uk