



Mount Pleasant Road, London, N17 6JQ

£700,000

 5
  0
  2
  E

*****OPEN TO OFFERS FOR A QUICK SALE*****

Welcome to this stunning property on Mount Pleasant Road in London! This beautiful house boasts 2 reception rooms and 3 spacious bedrooms, providing ample space for comfortable living. Built in 1910, this charming property exudes character and history, making it a truly unique find.

With a generous 1,410 sq ft of living space, this house offers plenty of room for both relaxation and entertainment. The HMO 5/6 bedroom setup provides flexibility for various living arrangements, whether you're looking for a family home or an investment opportunity.

Conveniently located close to Bruce Grove train station, commuting is a breeze, connecting you to the heart of London and beyond. Plus, being chain-free means you can make this property your own without any delays or complications.

With a rental potential of £5000 per calendar month, this property presents a fantastic investment opportunity for those looking to expand their portfolio. Don't miss out on the chance to own a piece of history in this vibrant London neighbourhood.

Contact us today to arrange a viewing and experience the charm and potential of this wonderful property on Mount Pleasant Road!

- Large Victorian Terrace
- Three Reception rooms
- Three Double bedrooms
- Two bathrooms
- Kitchen diner
- South East facing garden
- Close to Bruce Grove & easy access to Seven Sisters and or Turnpike Lane
- Chain Free

Viewing

To arrange a viewing on this property or require further information please contact one of our team on 0208 059 4444

Approx. Gross Internal Floor Area 1435 sq. ft / 133.37 sq. m

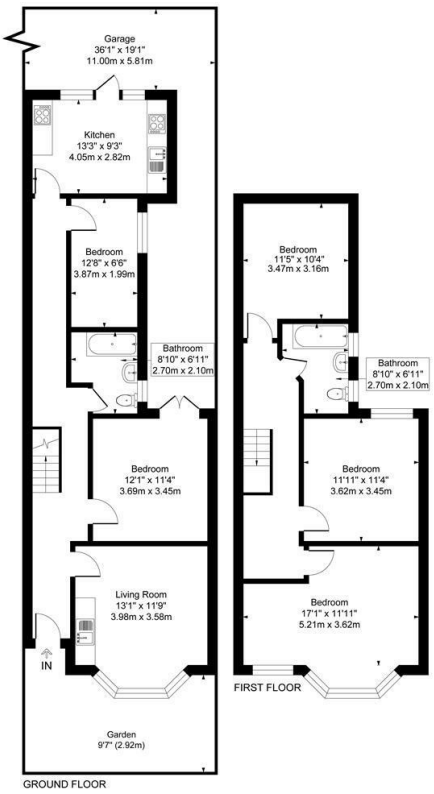
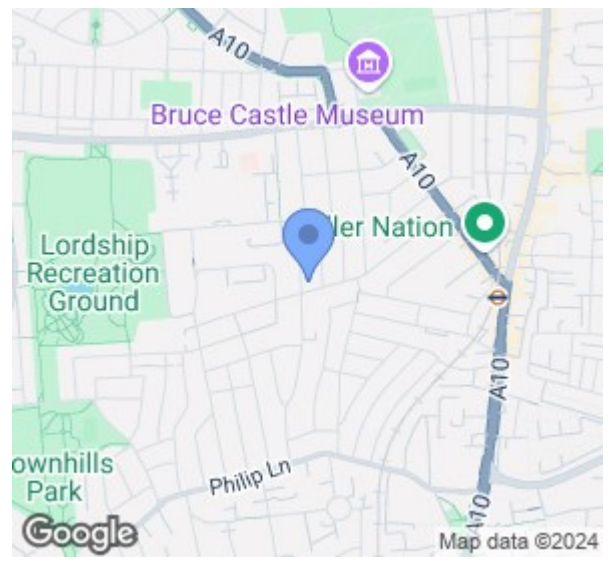


Illustration for identification purpose only, not in scale



Energy Efficiency Rating		Current	Potential
Very energy efficient - lower running costs			
(92 plus)	A		
(81-91)	B		76
(69-80)	C		
(55-68)	D	54	
(39-54)	E		
(21-38)	F		
(1-20)	G		
Not energy efficient - higher running costs			
England & Wales		EU Directive 2002/91/EC	



These particulars, whilst believed to be accurate are set out as a general outline only for guidance and do not constitute any part of an offer or contract. Intending purchasers should not rely on them as statements of representation of fact, but must satisfy themselves by inspection or otherwise as to their accuracy. No person in this firm's employment has the authority to make or give any representation or warranty in respect of the property.

Cole Harding

11 Northumberland Park, London, N17 0TA

T. 0208 059 4444 | E. info@coleharding.co.uk